

Kensington

Fabrics CAMENGO

Collection [EAST VILLAGE](#)

Reference 40450243

Colors Taupe

Composition 100 % co

Useful width 137 cm / 54 Inches

Match Straight match

Martindale 25000

Martindale upholstery : Between 20 000 and 40 000 cycles (Martindale) and between 15,000 and 30,000 double rubs (Wyzenbeek)

Pattern direction Non-railroaded

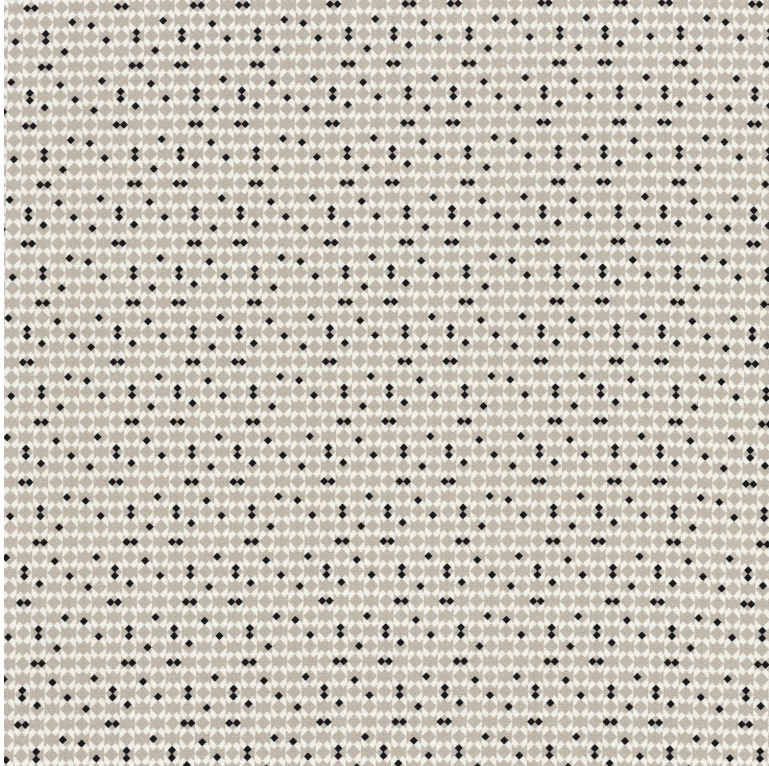
Weight in g/m² 440

Use 

Care 

Horizontal repeat 7 cm / 3 Inches

Vertical repeat 9 cm / 4 Inches



5 variations

