

Intimiste

Fabrics CAMENGO

Collection [ELITE](#)

Colors BEIGE

Reference 41920262

Composition 80 % CO ; 20 % PA

Useful width 141 cm / 56 Inches

Match 

Martindale 20000

Martindale upholstery : Between 20 000 and 40 000 cycles (Martindale) and between 15,000 and 30,000 double rubs (Wyzenbeek)

Pattern direction Non-railroaded

Weight in g/m² 420

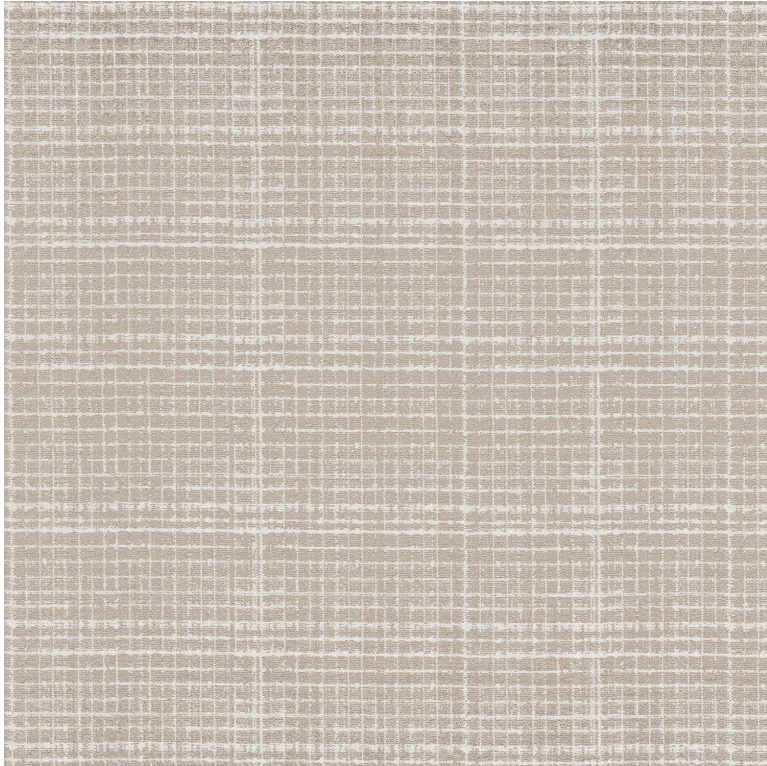
Use 

Cleaning instructions 

Country of origin India

Horizontal repeat 47 cm / 19 Inches

Vertical repeat 19 cm / 7 Inches



6 variations

