


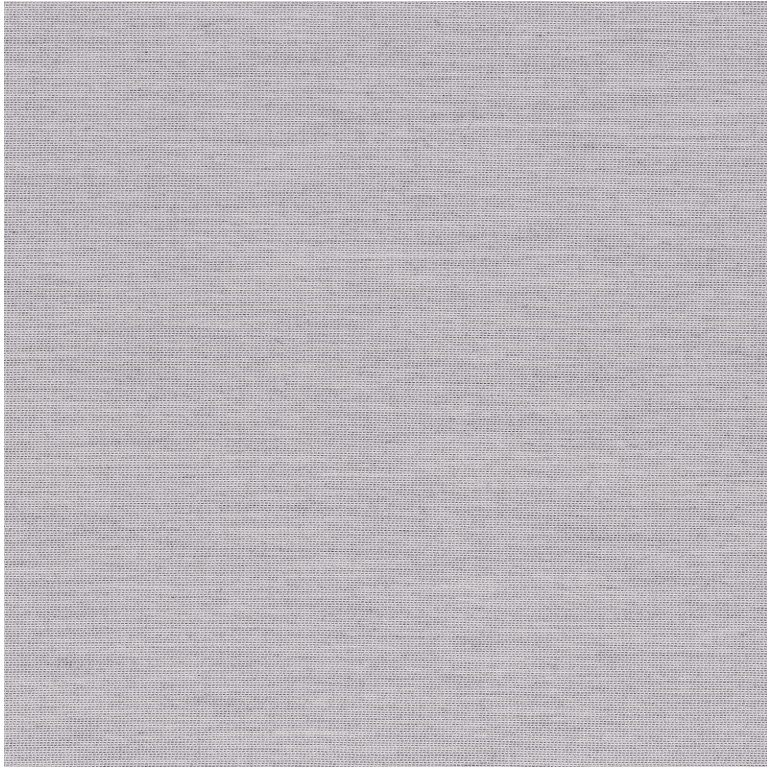


CASAMANCE

Motu

Fabrics CASAMANCE

<i>Collection</i>	MAUPITI
<i>Colors</i>	ACIER
<i>Reference</i>	44580252
<i>Composition</i>	100 % PC
<i>Useful width</i>	140 cm / 55 Inches
<i>Match</i>	
<i>Martindale</i>	35000
<i>Martindale use</i>	Martindale upholstery : Between 20 000 and 40 000 cycles (Martindale) and between 15,000 and 30,000 double rubs (Wyzenbeek)
<i>Wyzenbeek</i>	35000
<i>Pattern direction</i>	Non-railroaded
<i>Weight in g/m²</i>	330
<i>Use</i>	
<i>Outdoor</i>	9159
<i>Cleaning instructions</i>	
<i>Country of origin</i>	Spain



12 variations

