

# Mata-mata

Fabrics MISIA

Collection

[LE CHANT DU KAYAPO](#)

Colors

MORDORE

Reference

M206101

Composition

97 % VI ; 3 % PC

Useful width

132 cm / 52 Inches

Match



Martindale

35000

Martindale Use Upholstery : superior or equal to 40 000 cycles (Martindale) and superior or equal to 30,000 double rubs (Wyzenbeek)

Wyzenbeek

40000

Pattern direction

Non-railroaded

Weight in g/m<sup>2</sup>

545

Use



Cleaning instructions

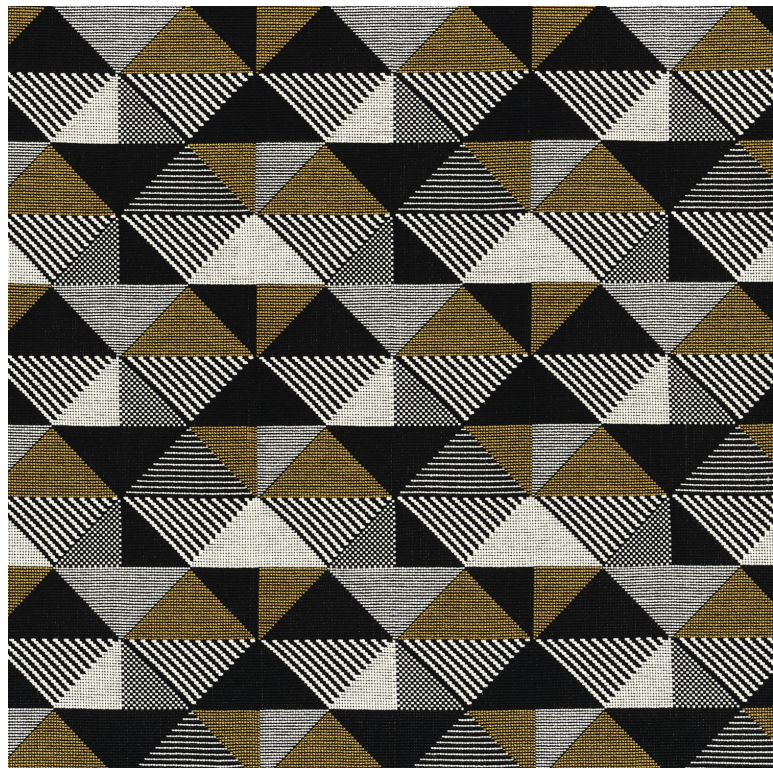


Country of origin

United States

Horizontal repeat

22 cm / 9 Inches



**6 variations**

