

# Infinis Meandres

Fabrics MISIA

Collection

[SECRETS D'AKROPOLIS](#)

Colors

HENNÉ

Reference

M218605

Composition

41 % VI ; 35 % CO ; 14 % PA ; 10 % LI

Useful width

138 cm / 54 Inches

Match



Martindale

30000

Martindale upholstery : Between 20 000 and 40 000 cycles (Martindale) and between 15,000 and 30,000 double rubs (Wyzenbeek)

Wyzenbeek

15000

Weight in g/m<sup>2</sup>

560

Use



Cleaning instructions



Country of origin

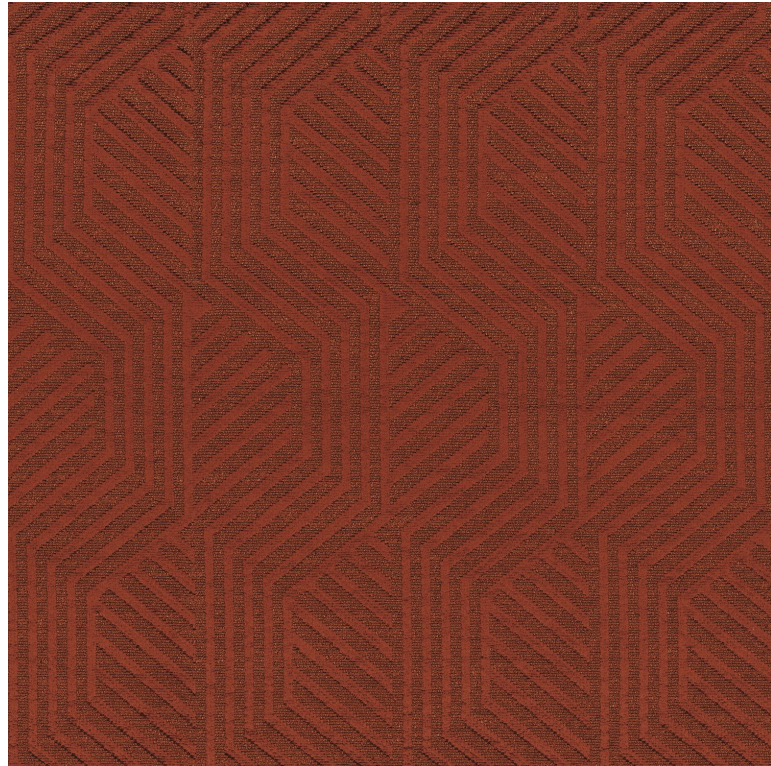
Italy

Horizontal repeat

9 cm / 4 Inches

Vertical repeat

22 cm / 9 Inches



**6 variations**

