

# Caryatide

Fabrics MISIA

Collection

[SECRETS D'AKROPOLIS](#)

Colors

MORDORE

Reference

M232701

Composition

64 % VI ; 30 % CO ; 6 % PES

Useful width

132 cm / 52 Inches

Match



Martindale

35000

Martindale upholstery : Between 20 000 and 40 000 cycles (Martindale) and between 15,000 and 30,000 double rubs (Wyzenbeek)

Weight in g/m<sup>2</sup>

365

Use

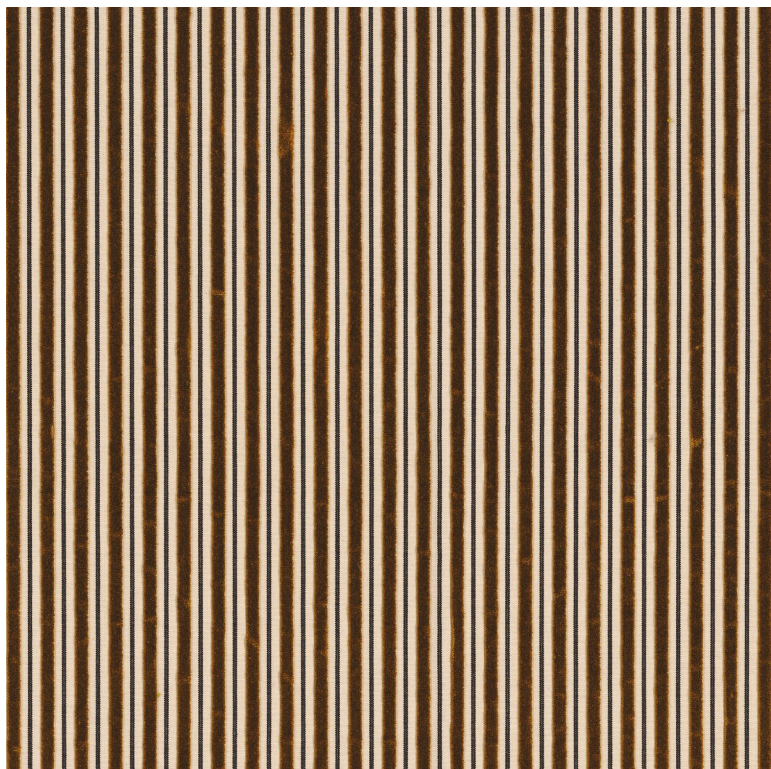


Cleaning instructions



Country of origin

France



8 variations

