

# Constantinople

Fabrics MISIA

Collection

[PROMESSE D'AILLEURS](#)

Colors

CHAMPAGNE

Reference

M266401

Composition

46 % PES ; 52 % VI ; 2 % CO

Useful width

138 cm / 54 Inches

Martindale

50000

Martindale use Upholstery : superior or equal to 40 000 cycles (Martindale) and superior or equal to 30,000 double rubs (Wyzenbeek)

Wyzenbeek

50000

Pattern direction

Non-railroaded

Weight in g/m<sup>2</sup>

920

Use

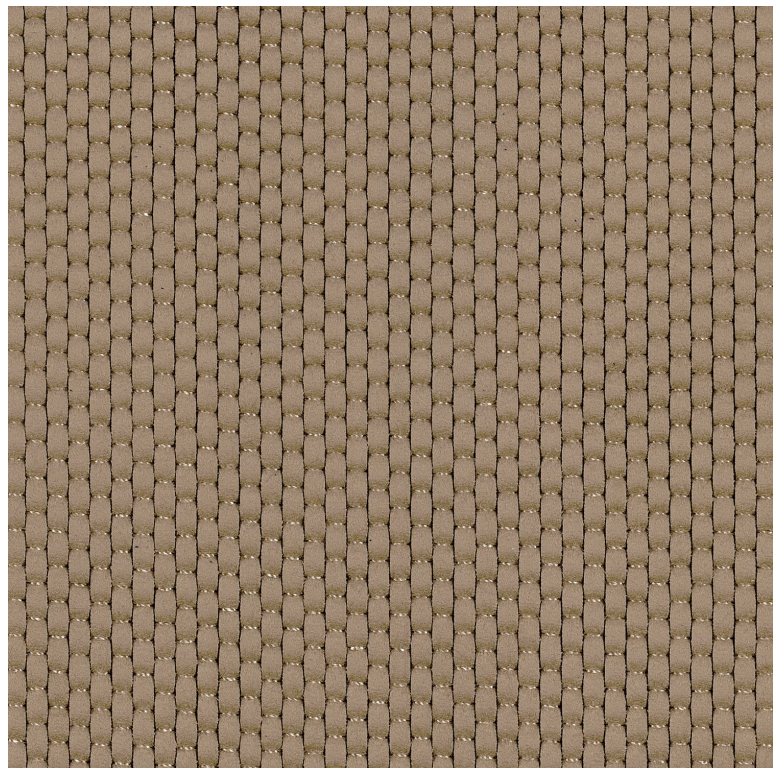


Cleaning instructions



Country of origin

Italy



**3 variations**

