

District

Fabrics CAMENGO

[Collection](#)

Reference 44930510

Colors Vert de gris

Composition 75 % vi ; 25 % pes

Useful width 140 cm / 55 Inches

Match 

Martindale 30000

Martindale use upholstery : Between 20 000 and 40 000 cycles (Martindale) and between 15,000 and 30,000 double rubs (Wyzenbeek)

Pattern direction Non-railroaded

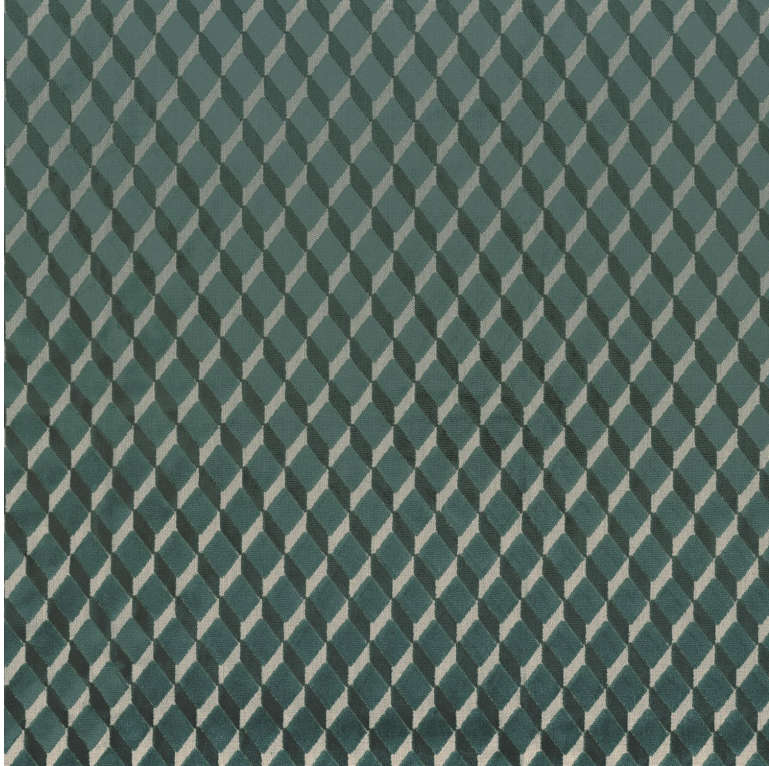
Weight in g/m² 586

Use   

Country of origin Belgium

Horizontal repeat 7 cm / 3 Inches

Vertical repeat 3 cm / 1 Inches



5 variations

District

District

District

District

District

Image not found or type unknown Image not found or type unknown Image not found or type unknown Image not found or type unknown Image not found or type unknown