

CASAMANCE

Interview

Fabrics CASAMANCE

[Collection](#), [LES TEXTURES 2](#)

Reference 36910325

Colors Carbone

Composition 40 % vi ; 33 % co ; 11 % li ; 11 % pc ; 5 % pes

Useful width 140 cm / 55 Inches

Match 

Martindale 40000

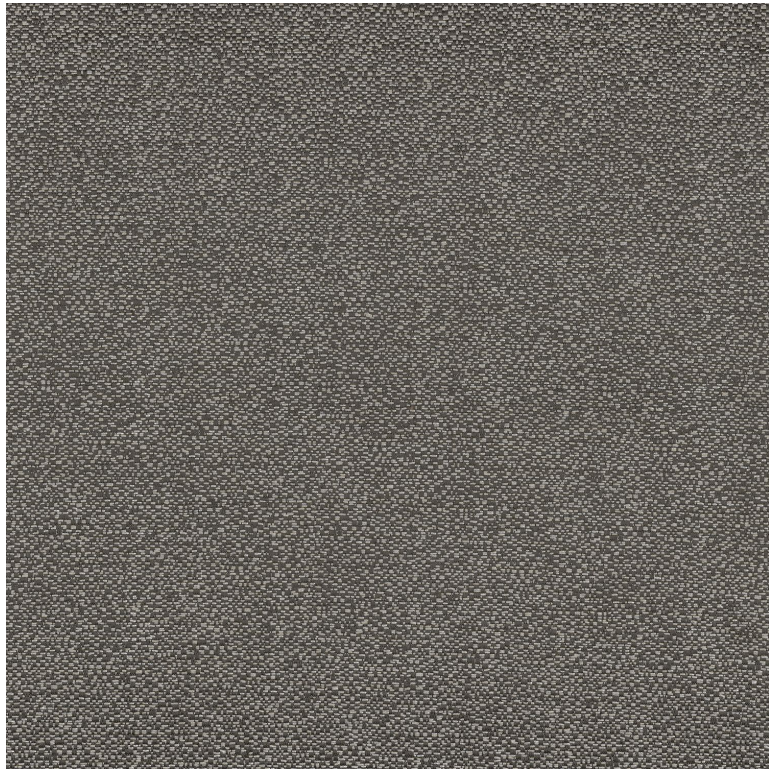
Martindale Upholstery : superior or equal to 40 000 cycles (Martindale) and superior or equal to 30,000 double rubs (Wyzenbeek)

Wyzenbeek 60000

Weight in g/m² 550

Use 

Country of origin Italy



13 variations

