

# CASAMANCE

## Kamari

### Fabrics CASAMANCE

Collection

[AMORGOS](#)

Reference

50170319

Colors

Sable

Composition

94 % pp ; 6 % pes - solution dyed

Useful width

140 cm / 55 Inches

Match

Free match

Martindale

30000

Martindale upholstery : Between 20 000 and 40 000 cycles (Martindale) and between 15,000 and 30,000 double rubs (Wyzenbeek)

Wyzenbeek

50000

Pattern direction

Non-railroaded

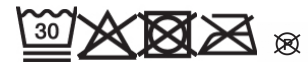
Weight in g/m<sup>2</sup>

516

Use



Care



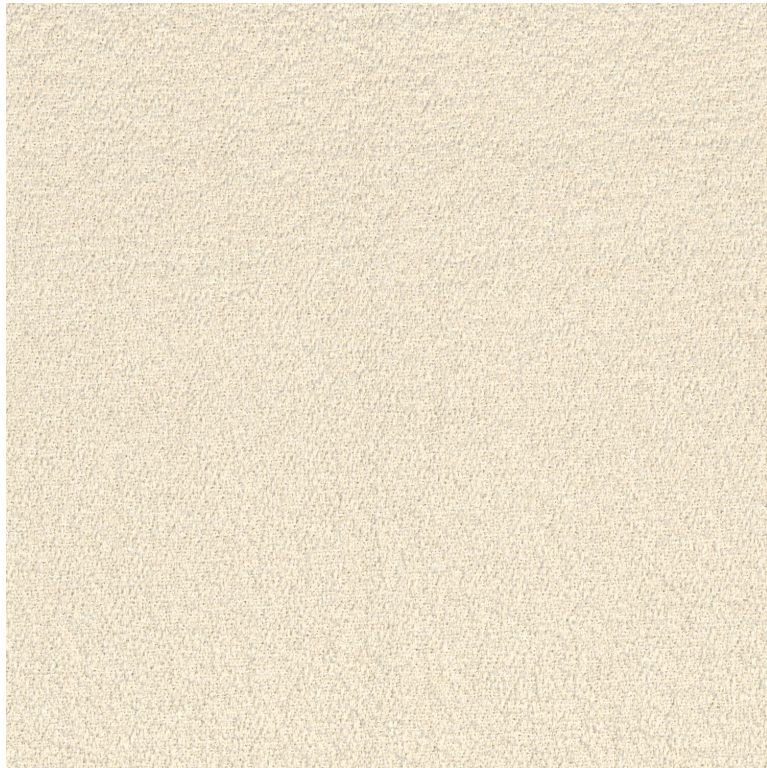
Features

Breathable

Mold resistance

Fastness to chlorinated and sea water >4-5 (Scale : 5)

Colour fastness to light >7-8 (Scale : 8)



**4 variations**

