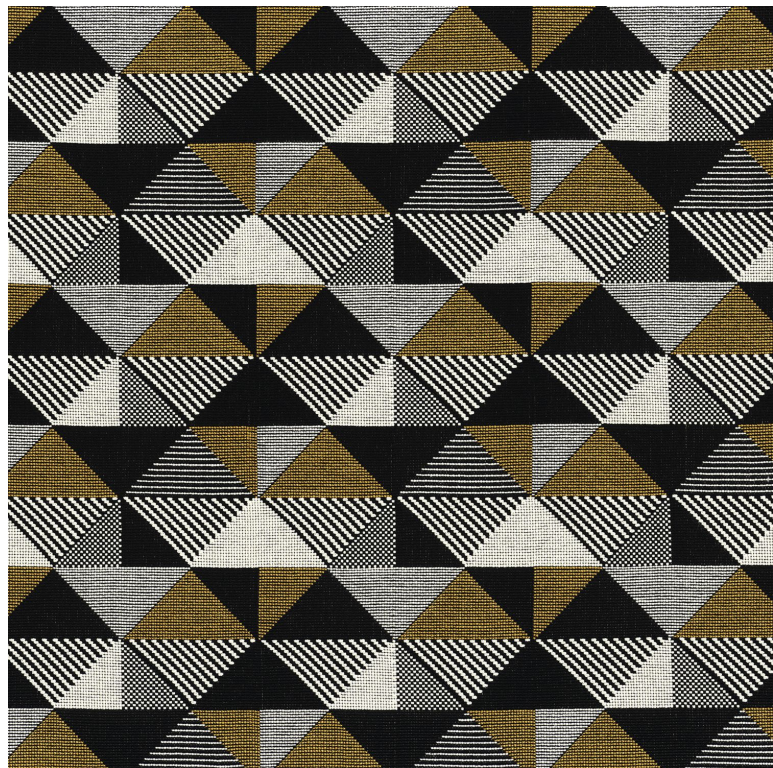


Mata-mata

Fabrics MISIA



<i>Collection</i>	LE CHANT DU KAYAPO
<i>Reference</i>	M206101
<i>Colors</i>	Mordore
<i>Composition</i>	97 % vi ; 3 % pc
<i>Useful width</i>	132 cm / 52 Inches
<i>Match</i>	Straight match
<i>Martindale</i>	35000
<i>Martindale use</i> (Wyzenbeek)	Highly resistant Upholstery : superior or equal to 40 000 cycles (Martindale) and superior or equal to 30,000 double rubs
<i>Wyzenbeek</i>	40000
<i>Pattern direction</i>	Non-railroaded
<i>Weight in g/m²</i>	545
<i>Use</i>	 
<i>Care</i>	 
<i>Country of origin</i>	United states
<i>Horizontal repeat</i>	22 cm / 9 Inches

6 variations

