

Reverie persane

Fabrics MISIA

Collection

[FRENCH RIVIERA](#)

Reference

M275101

Composition

62 % co ; 17 % li ; 13 % pes ; 8 % vi

Useful width

130 cm / 51 Inches

Match

Straight match

Martindale

100000

Martindale use Upholstery : superior or equal to 40 000 cycles (Martindale) and superior or equal to 30,000 double rubs (Wyzenbeek)

Wyzenbeek

50000

Pattern direction

Non-railroaded

Weight in g/m²

945

Performance Accoustique

aw - 0.15

Use



Care

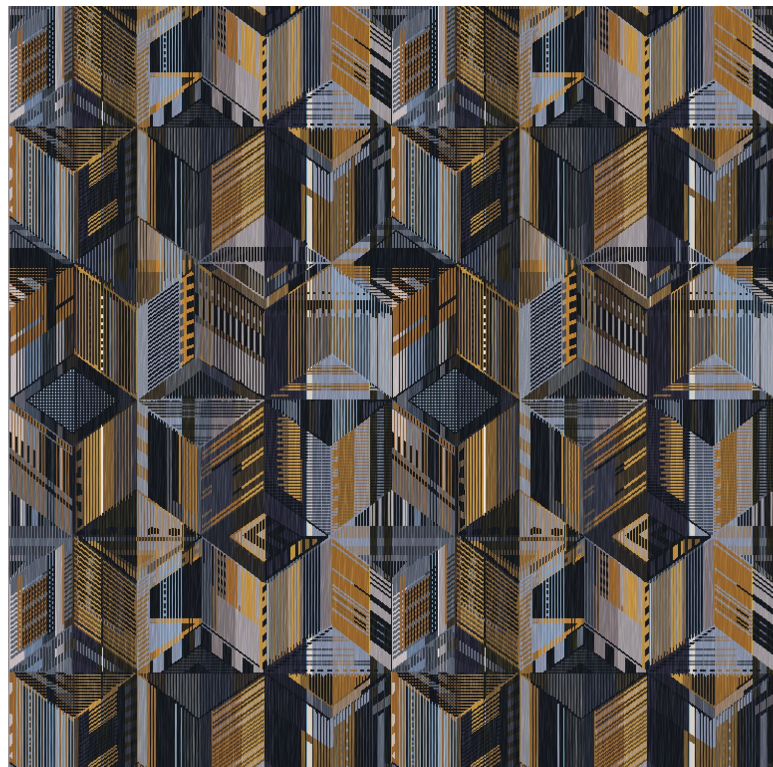


Country of origin

United states

Horizontal repeat

65 cm / 26 Inches



2 variations

