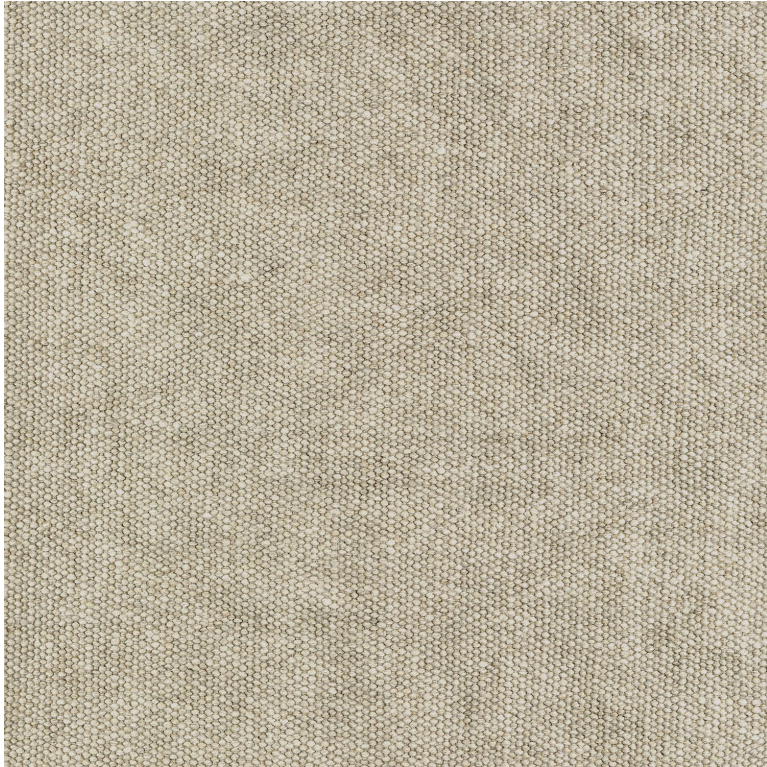










L esterel

Fabrics MISIA



<i>Collection</i>	FRENCH RIVIERA
<i>Reference</i>	M278603
<i>Composition</i>	100 % li
<i>Useful width</i>	140 cm / 55 Inches
<i>Shrinkage</i>	<3%
<i>Martindale</i>	50 000
<i>Martindale use</i>	Martindale upholstery : Between 20 000 and 40 000 cycles (Martindale) and between 15,000 and 30,000 double rubs (Wyzenbeek)
<i>Wyzenbeek</i>	30000
<i>Pattern direction</i>	Non-railroaded
<i>Weight in g/m²</i>	1180
<i>Performance Accoustique</i>	aw - 0.15
<i>Use</i>	  
<i>Care</i>	    
<i>Country of origin</i>	France
<i>Peculiarities</i>	Master of Linen

11 variations

