

Gaillon

Fabrics MISIA

Collection [ESTIVAL](#)

Reference M363402

Colors Sable

Composition 99 % pp ; 1 % pes - solution dyed

Useful width 143 cm / 56 Inches

Match Free match

Martindale 60000

Martindale Use Upholstery : superior or equal to 40 000 cycles (Martindale) and superior or equal to 30,000 double rubs (Wyzenbeek)

Wyzenbeek 55000

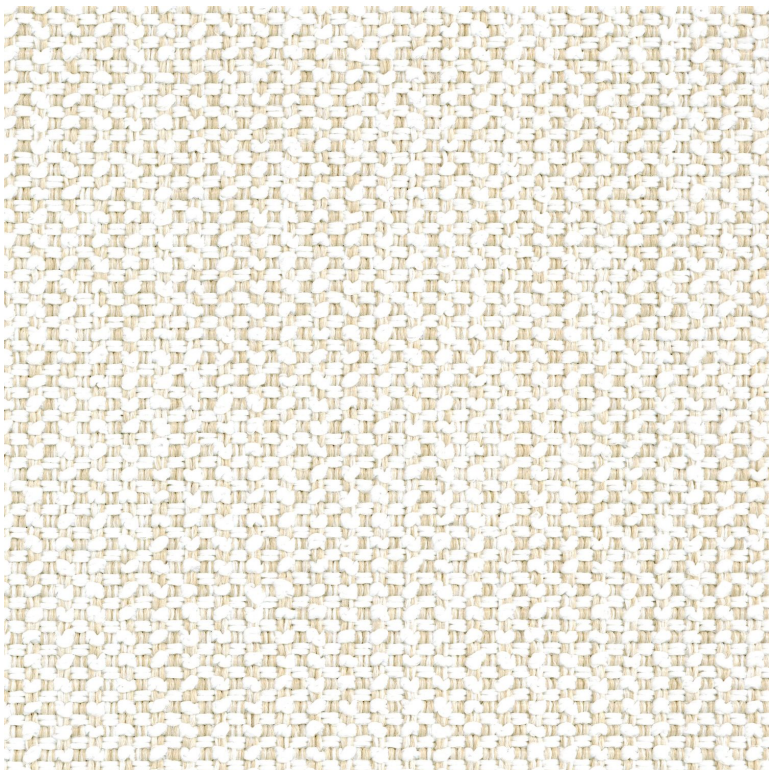
Pattern direction Non-railroaded

Weight in g/m² 610

Use  

Care     

Country of origin Italy



4 variations

