

CASAMANCE

Nubra

Fabrics CASAMANCE

Collection

[MANALI](#), [MAYFAIR](#)

Reference

11600456

Composition

43 % pc ; 31 % vi ; 26 % pes

Useful width

140 cm / 55 Inches

Match

Free match

Martindale

40000

Martindale Use Upholstery : superior or equal to 40 000 cycles (Martindale) and superior or equal to 30,000 double rubs (Wyzenbeek)

Wyzenbeek

30000

Pattern direction

Non-railroaded

Weight in g/m²

689

Performance Accoustique

aw - 0.15

Use

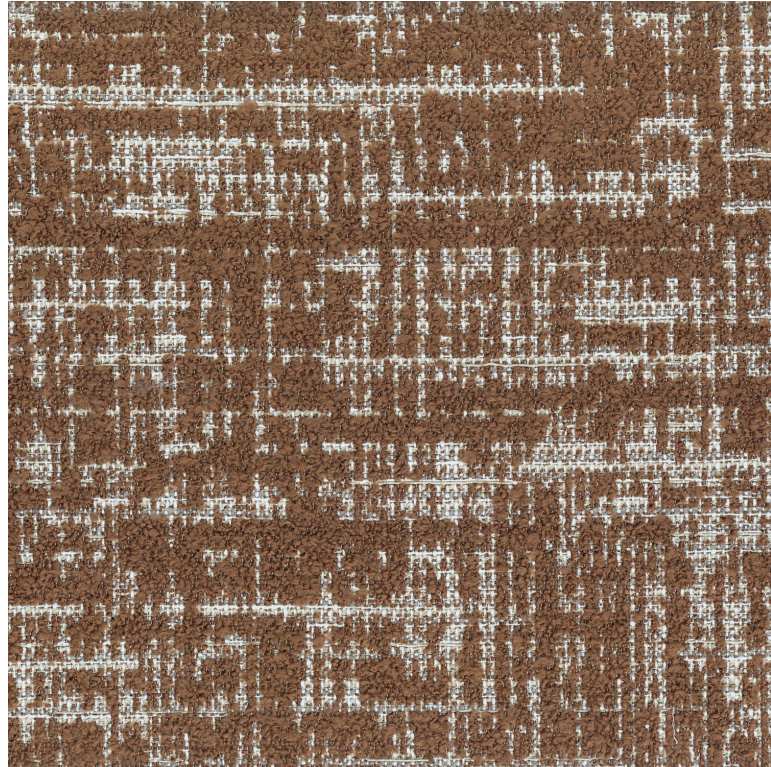


Care



Country of origin

Italy



5 variations

