

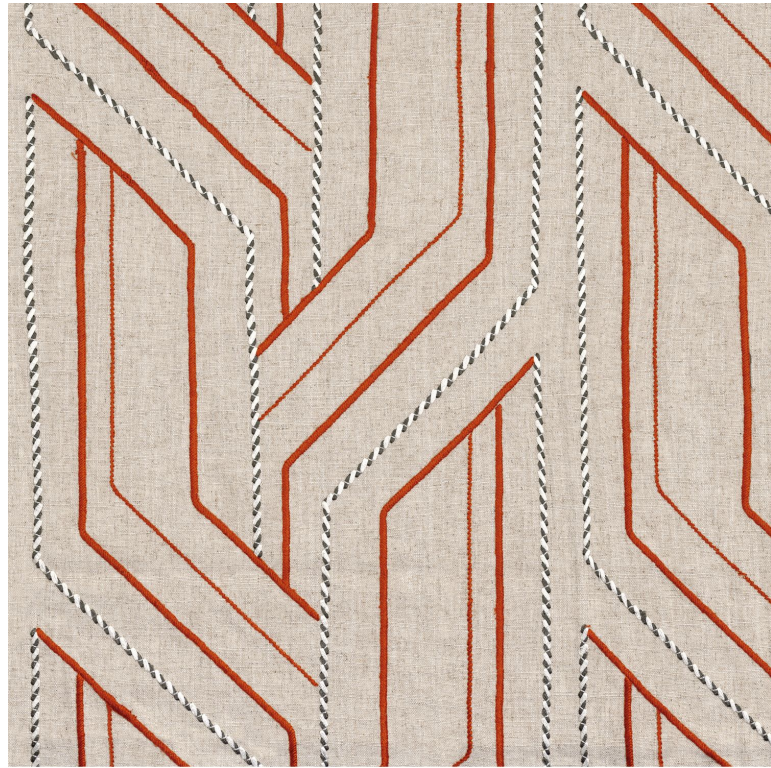


CASAMANCE

Inka

Fabrics CASAMANCE

<i>Collection</i>	VALVIDIA
<i>Reference</i>	32910551
<i>Colors</i>	Flax / orange
<i>Composition</i>	70 % vi ; 30 % li - viscose, cotton and polyester embroidery
<i>Useful width</i>	128 cm / 50 Inches
<i>Match</i>	Straight match
<i>Pattern direction</i>	Non-railroaded
<i>Weight in g/m²</i>	500
<i>Use</i>	
<i>Care</i>	
<i>Country of origin</i>	India
<i>Horizontal repeat</i>	32 cm / 13 Inches
<i>Vertical repeat</i>	31 cm / 12 Inches



5 variations

