

CASAMANCE

Passage

Fabrics CASAMANCE

Collection

Reference

Composition

57 % vi ; 23 % li ; 10 % co ; 8 % pes ; 2 % pc

Useful width

140 cm / 55 Inches

Match

Free match

Martindale

40000

Martindale use Upholstery : superior or equal to 40 000 cycles (Martindale) and superior or equal to 30,000 double rubs (Wyzenbeek)

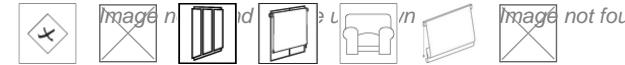
Wyzenbeek

80000

Weight in g/m²

500

Use

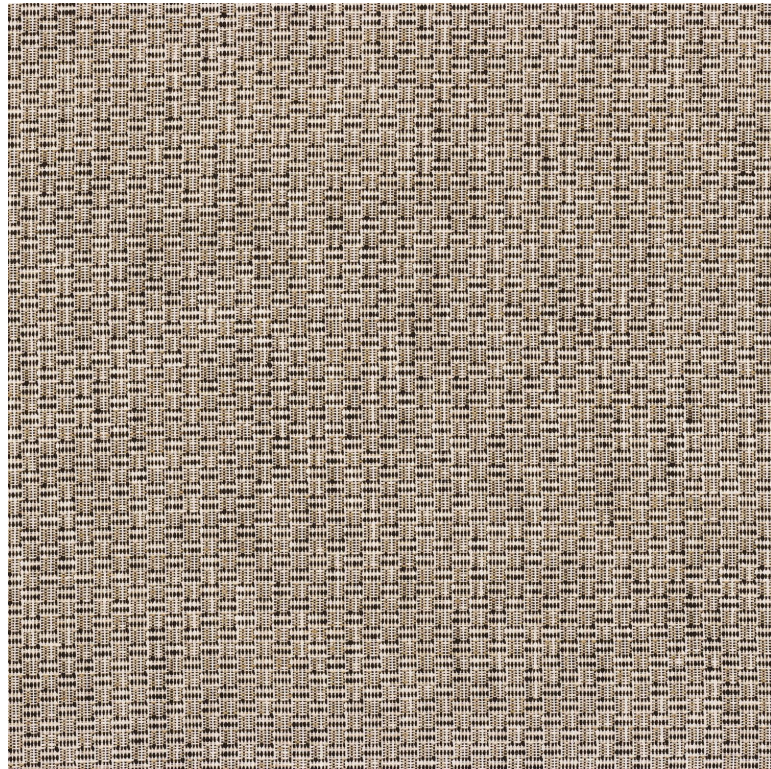


Care



Country of origin

Italy



0 variation