

CASAMANCE

Duo

Fabrics CASAMANCE

Collection

[AVANT PREMIERE](#)

Reference

38610505

Composition

94 % pp fr ; 6 % pes fr

Useful width

140 cm / 55 Inches

Match

Free match

Martindale

35000

Martindale test Upholstery : superior or equal to 40 000 cycles (Martindale) and superior or equal to 30,000 double rubs (Wyzenbeek)

Wyzenbeek

30000

Pattern direction

Non-railroaded

Weight in g/m²

471

Performance Accoustique

aw - 0.15

Use



Care



Country of origin

Italy

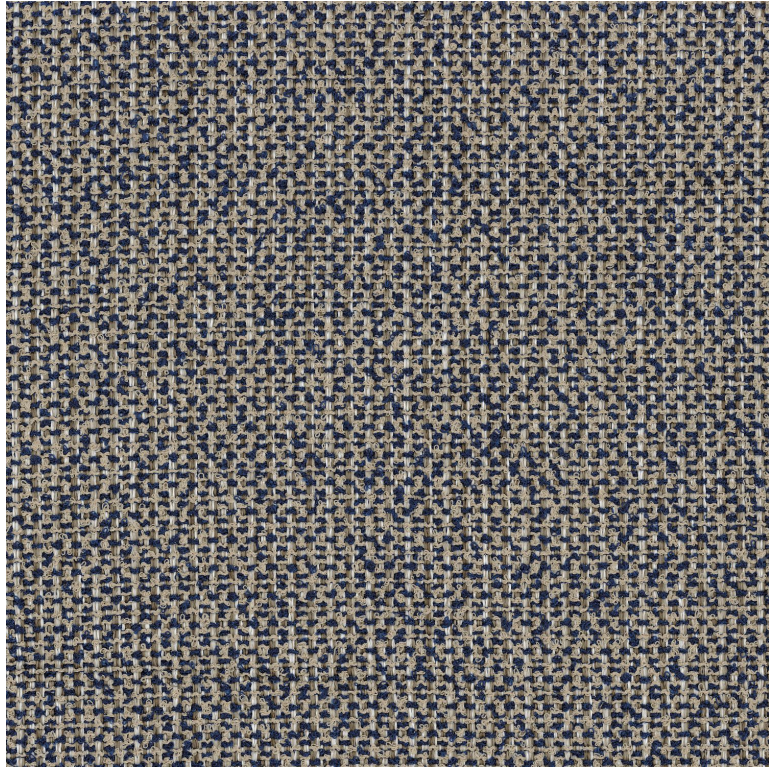
Features

Breathable

Mold resistance

Fastness to chlorinated and sea water >4-5 (Scale : 5)

Colour fastness to light >7-8 (Scale : 8)



5 variations

