

CASAMANCE

Marigny

Fabrics CASAMANCE

Collection

Reference

Composition

40 % pa ; 23 % vi ; 20 % li ; 17 % pes

Match

Straight match

Martindale

30000

Martindale use
(Wyzenbeek)

Medium use upholstery : Between 20 000 and 40 000 cycles (Martindale) and between 15,000 and 30,000 double rubs

Wyzenbeek

75000

Use



Care



Country of origin

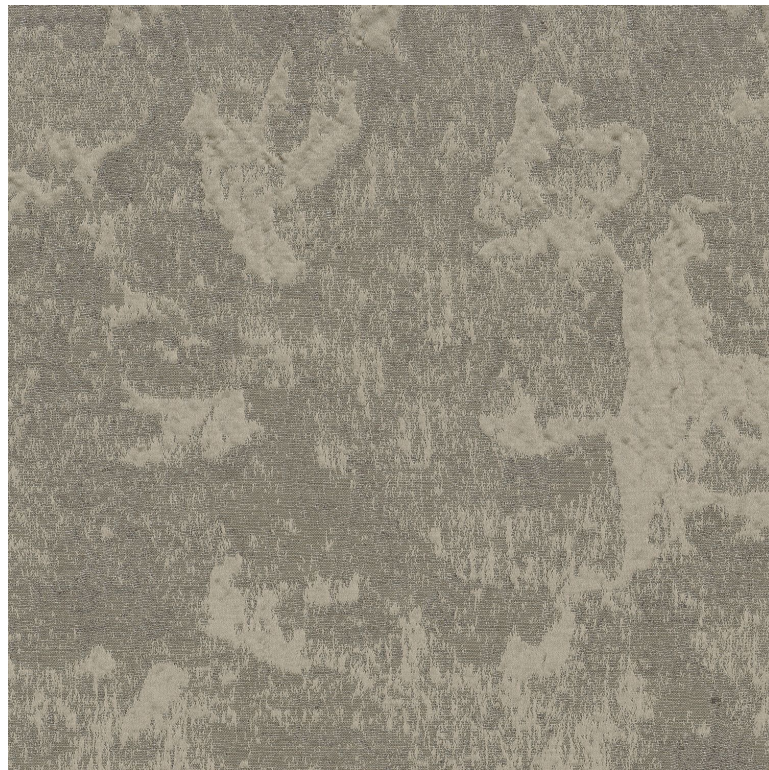
India

Horizontal repeat

48 cm / 19 Inches

Vertical repeat

66 cm / 26 Inches



0 variation