

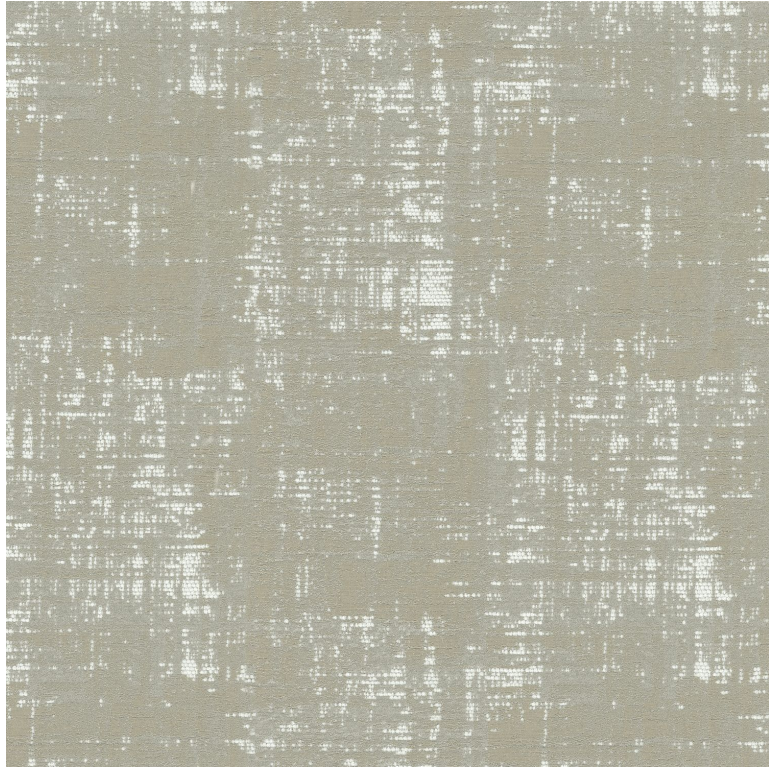


# CASAMANCE

## Dress code

### Fabrics CASAMANCE

<i>Collection</i>	<a href="#">GALLIERA</a>
<i>Reference</i>	42300411
<i>Composition</i>	52 % co ; 24 % vi ; 24 % pa
<i>Useful width</i>	138 cm / 54 Inches
<i>Match</i>	Straight match
<i>Martindale</i>	30000
<i>Martindale use Upholstery : superior or equal to 40 000 cycles (Martindale) and superior or equal to 30,000 double rubs (Wyzenbeek)</i>	
<i>Wyzenbeek</i>	80000
<i>Weight in g/m<sup>2</sup></i>	370
<i>Use</i>	
<i>Care</i>	
<i>Country of origin</i>	India
<i>Horizontal repeat</i>	23 cm / 9 Inches
<i>Vertical repeat</i>	26 cm / 10 Inches
<i>Confection tips</i>	For the upholstery oversee and use a tape/the fabric falls on the floor when making into curtains



**7 variations**

