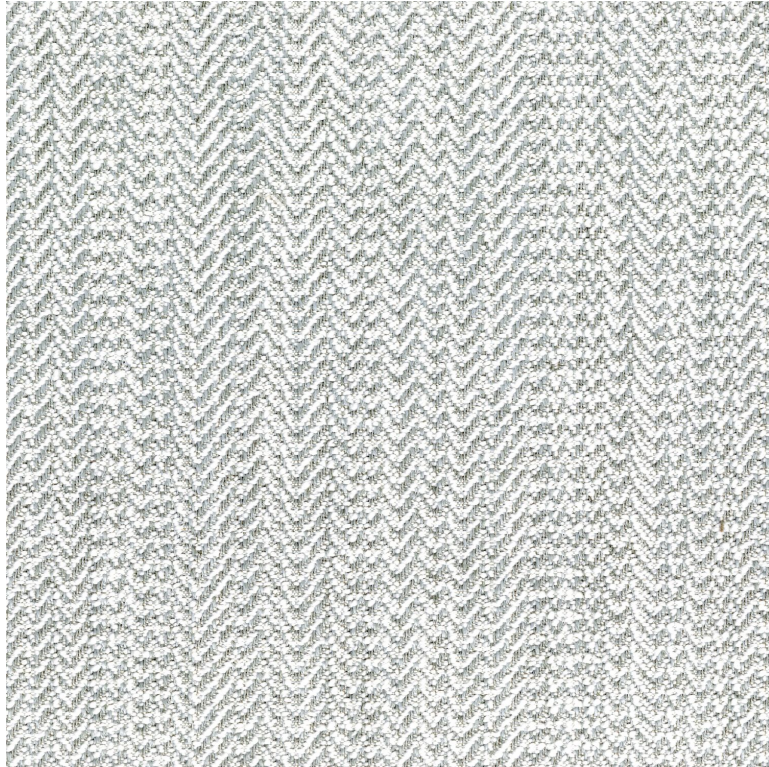


# CASAMANCE

## Certitude

### Fabrics CASAMANCE

<i>Collection</i>	<a href="#">HARMONIE</a>
<i>Reference</i>	45150452
<i>Colors</i>	Givre
<i>Composition</i>	36 % co recycled ; 32 % pes ; 14 % pc ; 12 % vi ; 6 % li
<i>Useful width</i>	140 cm / 55 Inches
<i>Match</i>	Free match
<i>Martindale</i>	30000
<i>Martindale upholstery</i> (Wyzenbeek)	Between 20 000 and 40 000 cycles (Martindale) and between 15,000 and 30,000 double rubs
<i>Wyzenbeek</i>	100000
<i>Pattern direction</i>	Non-railroaded
<i>Weight in g/m<sup>2</sup></i>	690
<i>Use</i>	
<i>Care</i>	
<i>Country of origin</i>	Italy



**4 variations**

