

CASAMANCE

Melange

Fabrics CASAMANCE

Collection

[POINT DE VUE](#)

Reference

45690323

Colors

Orange celadon

Composition

44 % vi ; 26 % co ; 16 % pes ; 14 % li

Useful width

143 cm / 56 Inches

Match

Straight match

Martindale

37000

Martindale upholstery : Between 20 000 and 40 000 cycles (Martindale) and between 15,000 and 30,000 double rubs (Wyzenbeek)

Wyzenbeek

50000

Pattern direction

Non-railroaded

Weight in g/m²

630

Use



Care



Country of origin

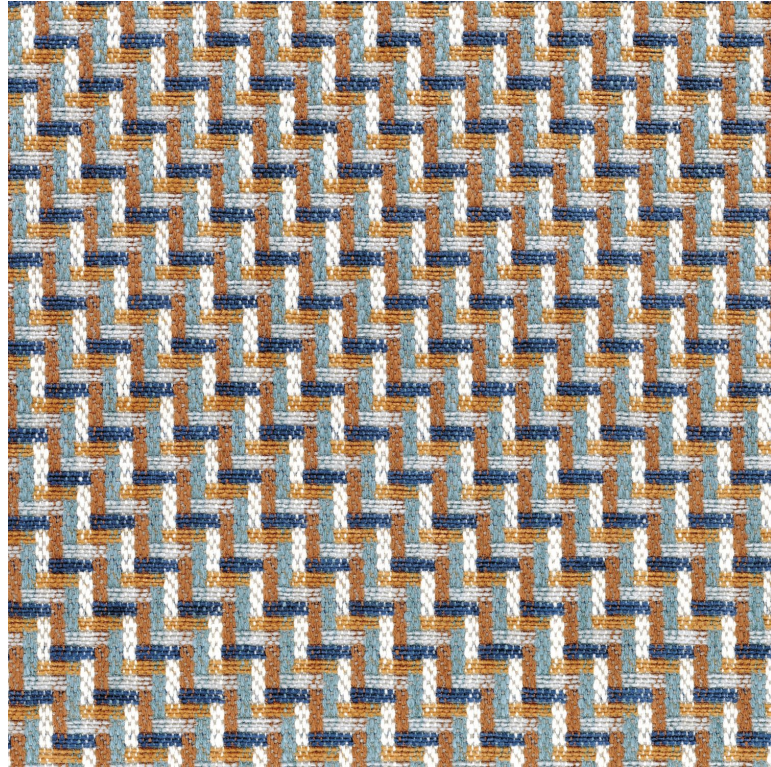
Italy

Horizontal repeat

3 cm / 1 Inches

Vertical repeat

3 cm / 1 Inches



4 variations

