

CASAMANCE

Anni

Fabrics CASAMANCE

Collection

[MANIFESTO](#), [POLYCHROMIE](#)

Reference

46030241

Composition

30 % vi ; 30 % pes ; 19 % ac ; 14 % li ; 7 % co recycled

Useful width

140 cm / 55 Inches

Match

Free match

Martindale

40000

Martindale Upholstery : superior or equal to 40 000 cycles (Martindale) and superior or equal to 30,000 double rubs (Wyzenbeek)

Wyzenbeek

75000

Pattern direction

Non-railroaded

Weight in g/m²

600

Performance Accoustique

aw - 0.15

Use

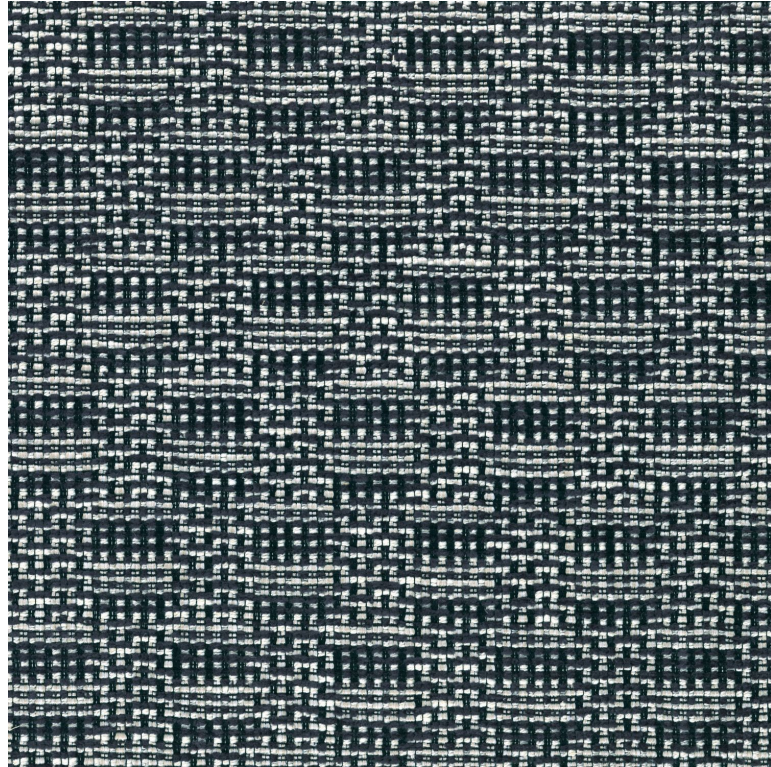


Care



Country of origin

Italy



5 variations

