

CASAMANCE

Solano

Fabrics CASAMANCE

Collection

[WEST BAY](#)

Reference

48090605

Composition

59 % pp ; 41 % pc - solution dyed

Useful width

137 cm / 54 Inches

Shrinkage

<2%

Match

Free match

Martindale

25000

Martindale upholstery : Between 20 000 and 40 000 cycles (Martindale) and between 15,000 and 30,000 double rubs (Wyzenbeek)

Wyzenbeek

35000

Pattern direction

Non-railroaded

Weight in g/m²

544

Performance Accoustique

aw - 0.15

Use



Care

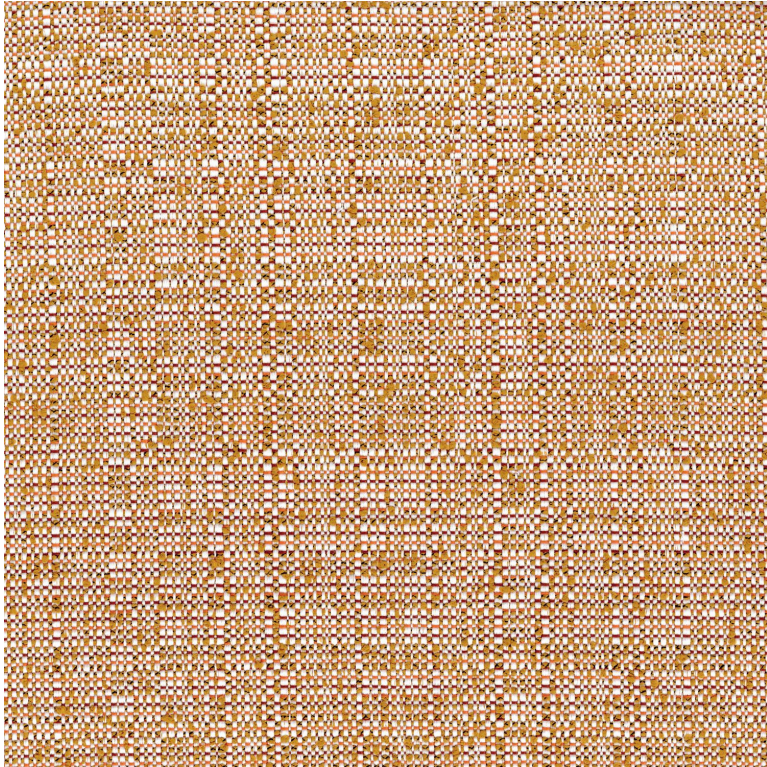


Country of origin

Turkey

Features

Breathable
Mold resistance



6 variations

