

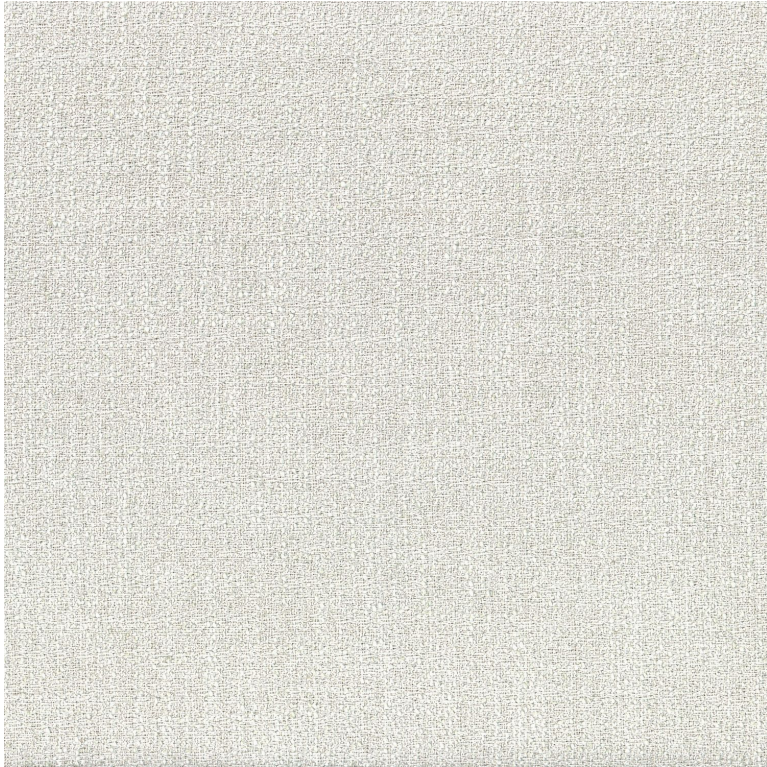


# CASAMANCE

## Dune

### Fabrics CASAMANCE

<i>Collection</i>	<a href="#">DUNE</a> , <a href="#">DUNE 2</a>
<i>Reference</i>	48623249
<i>Composition</i>	91 % pes ; 9 % li - --
<i>Useful width</i>	296 cm / 117 Inches
<i>Shrinkage</i>	<3%
<i>Match</i>	Free match
<i>Martindale</i>	30000
<i>Martindale use (Wyzenbeek)</i>	Moderate use upholstery : Between 20 000 and 40 000 cycles (Martindale) and between 15,000 and 30,000 double rubs (Wyzenbeek)
<i>Wyzenbeek</i>	50000
<i>Pattern direction</i>	Railroaded
<i>Weight in g/m²</i>	520
<i>Performance Accoustique</i>	aw - 0.15
<i>Use</i>	
<i>Care</i>	
<i>Country of origin</i>	India



41 variations

