

# Passerelle

## Fabrics CAMENGO

*Collection* [JE T'AIME](#)

*Reference* 37280464

*Composition* 65 % vi ; 35 % pes

*Useful width* 140 cm / 55 Inches

*Match* Straight match

*Martindale* 30000

*Martindale upholstery* : Between 20 000 and 40 000 cycles (Martindale) and between 15,000 and 30,000 double rubs (Wyzenbeek)

*Pattern direction* Non-railroaded

*Weight in g/m<sup>2</sup>* 590

*Performance Accoustique* aw - 0.15

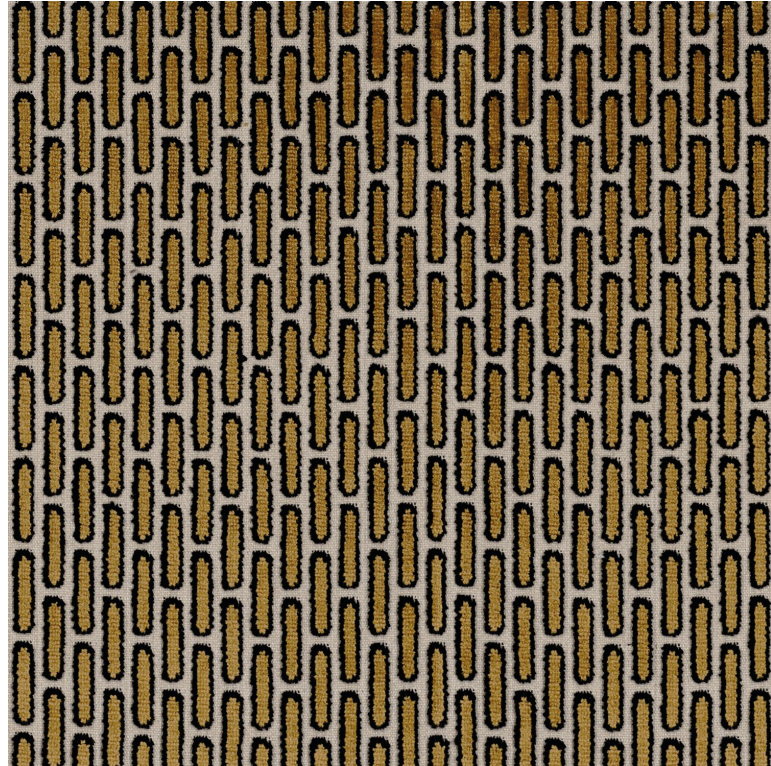
*Use*  

*Care*     

*Country of origin* Belgium

*Horizontal repeat* 2 cm / 1 Inches

*Vertical repeat* 3 cm / 1 Inches



## 4 variations

