

# Port jackson

Fabrics CAMENGO

*Collection* [SYDNEY](#)

*Reference* 41210606

*Composition* 83 % pes recycled ; 17 % pes

*Useful width* 300 cm / 118 Inches

*Match* Straight match

*Pattern direction* Non-railroaded

*Weight in g/m<sup>2</sup>* 250

*Use* 

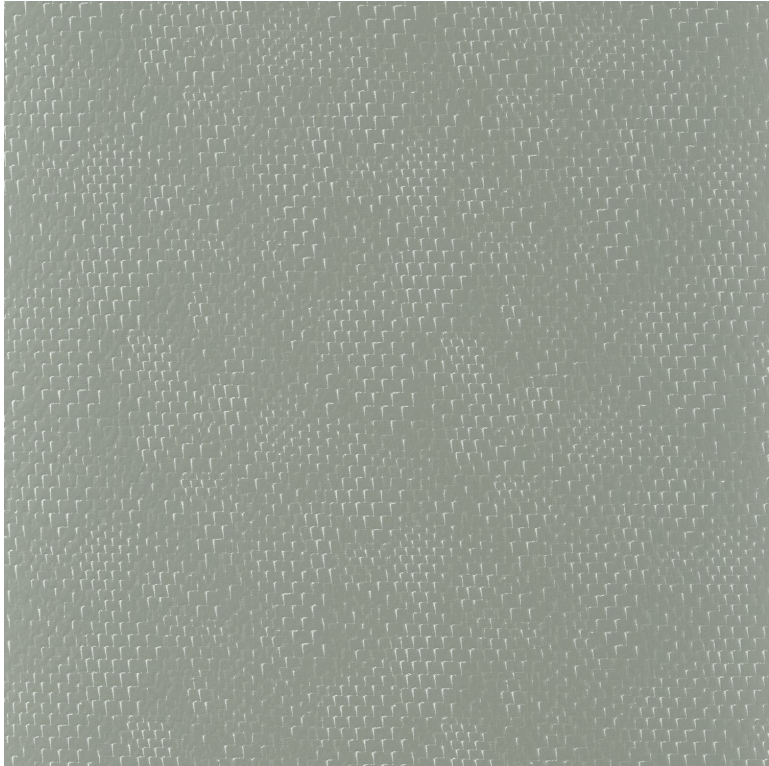
*Care* 

*Country of origin* India

*Horizontal repeat* 25 cm / 10 Inches

*Vertical repeat* 31 cm / 12 Inches

*Confection tips* Fabrics can be turned for continuous confection with change of direction of drawing



**7 variations**

