

# Shikuan

Fabrics CAMENGO

Collection

[TOTEM SHEERS](#)

Reference

43830190

Composition

55 % co organic ; 45 % pes recycled - cotton embroidery

Useful width

287 cm / 113 Inches

Shrinkage

<3%

Match

Straight match

Pattern direction

Railroaded

Weight in g/m<sup>2</sup>

180

Performance Accoustique

aw - 0.15

Use



Care



Country of origin

India

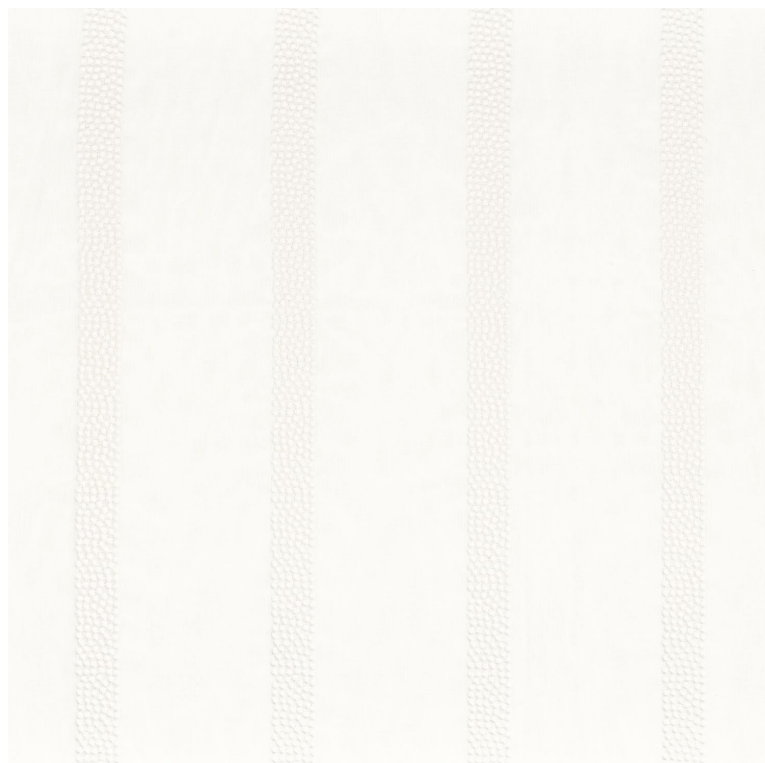
Horizontal repeat

16 cm / 6 Inches

Features

Confection tips

Fabrics can be turned for continious confection with change of direction of drawing



**5 variations**

