

Nazca

Fabrics CAMENGO

Collection [CUZCO TEXTURES](#)

Reference 49460402

Composition 45 % pc ; 35 % pes ; 20 % co

Useful width 140 cm / 55 Inches

Shrinkage <3%

Match Free match

Martindale 25000

Martindale upholstery : Between 20 000 and 40 000 cycles (Martindale) and between 15,000 and 30,000 double rubs (Wyzenbeek)

Wyzenbeek 40000

Pattern direction Non-railroaded

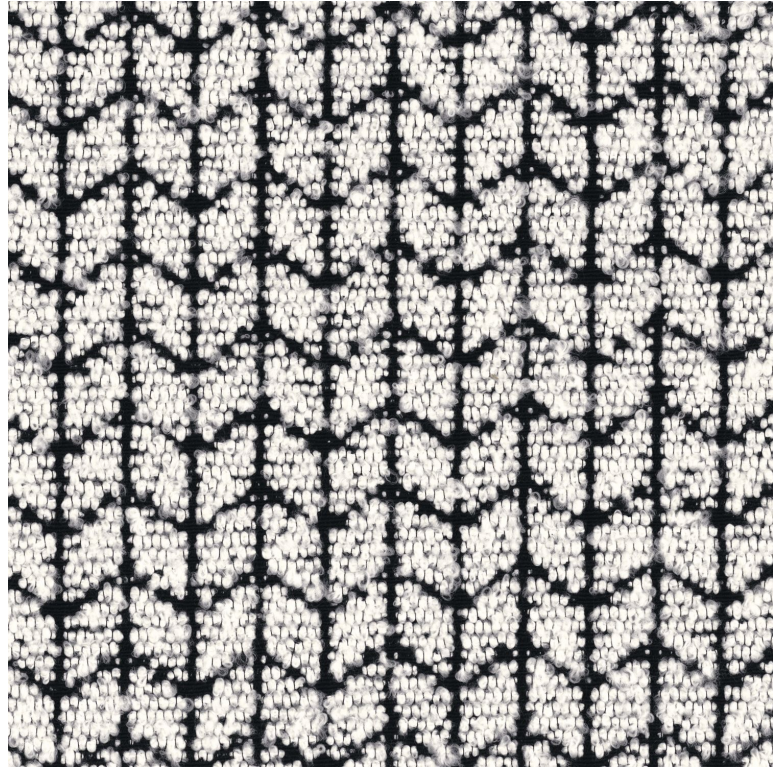
Weight in g/m² 490

Performance Accoustique aw - 0.15

Use 

Care 

Country of origin Turkey



Horizontal repeat

5 cm / 2 Inches

Vertical repeat

3 cm / 1 Inches

Features

4 variations

