






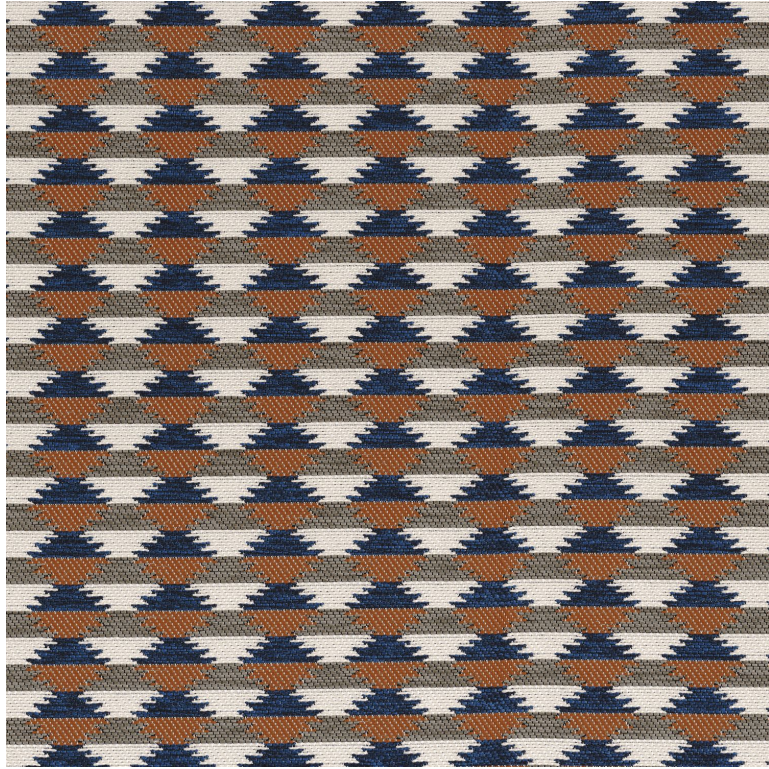


# CASAMANCE

## Moki

### Fabrics CASAMANCE

Collection	<a href="#">HOZHO</a>
Reference	47370328
Composition	70 % pp fr polypropylen fr ; 30 % pes fr - solution dyed
Useful width	144 cm / 57 Inches
Shrinkage	<1%
Match	Straight match
Martindale	30000
Martindale use (Wyzenbeek)	30000 Medium use upholstery : Between 20 000 and 40 000 cycles (Martindale) and between 15,000 and 30,000 double rubs
Wyzenbeek	30000
Weight in g/m <sup>2</sup>	470
Performance Accoustique	aw - 0.15
Use	 
Care	    
Country of origin	Italy
Horizontal repeat	6 cm / 2 Inches
Vertical repeat	3 cm / 1 Inches



**4 variations**

