

# CASAMANCE

## Milan

Fabrics CASAMANCE

Collection

[MILAN](#)

Reference

10940133

Colors

écru

Composition

51 % co ; 30 % vi ; 13 % li ; 6 % pes - -

Useful width

140 cm / 55 Inches

Match

Straight match

Martindale

30000

Martindale upholstery : Between 20 000 and 40 000 cycles (Martindale) and between 15,000 and 30,000 double rubs (Wyzenbeek)

Wyzenbeek

80000

Weight in g/m<sup>2</sup>

449

Use



Care



Country of origin

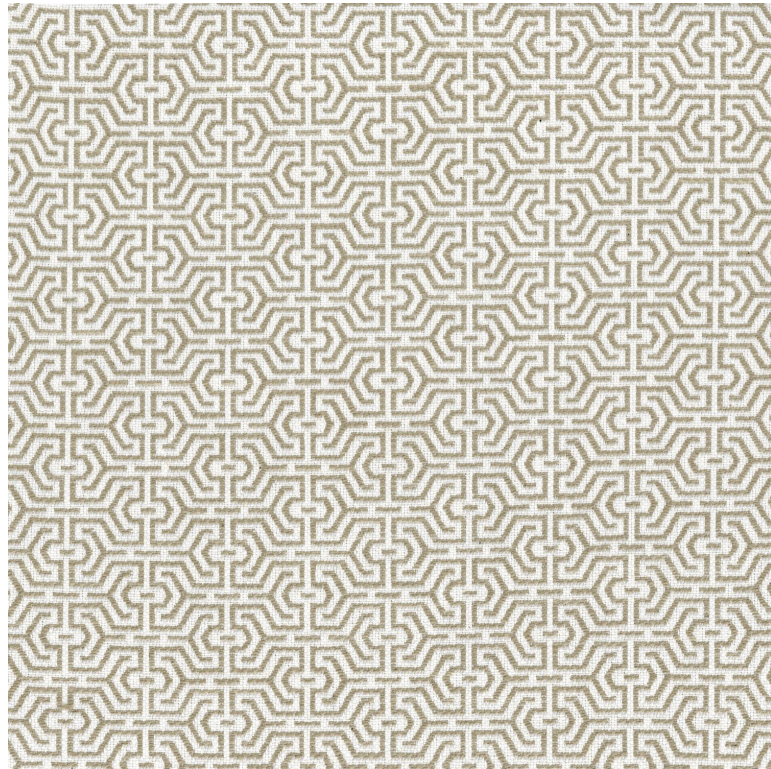
Italy

Horizontal repeat

6 cm / 2 Inches

Vertical repeat

3 cm / 1 Inches



**7 variations**

