

Solstice sheer

Fabrics CAMENGO

Collection

[MOON SHEERS](#)

Reference

51540273

Composition

100 % pes - broderie polyamide polyester et viscose

Useful width

284 cm / 112 Inches

Shrinkage

<1%

Match

Straight match

Pattern direction

Railroaded

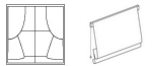
Weight in g/m²

170

Performance Accoustique

aw - 0.15

Use



Care



Country of origin

India

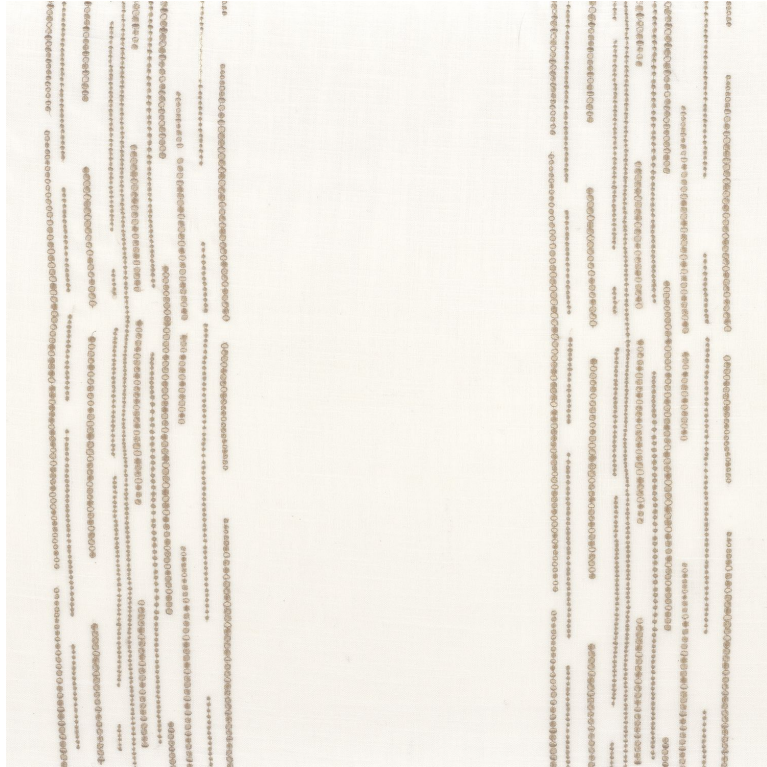
Horizontal repeat

39 cm / 15 Inches

Vertical repeat

36 cm / 14 Inches

Features



4 variations

