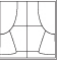





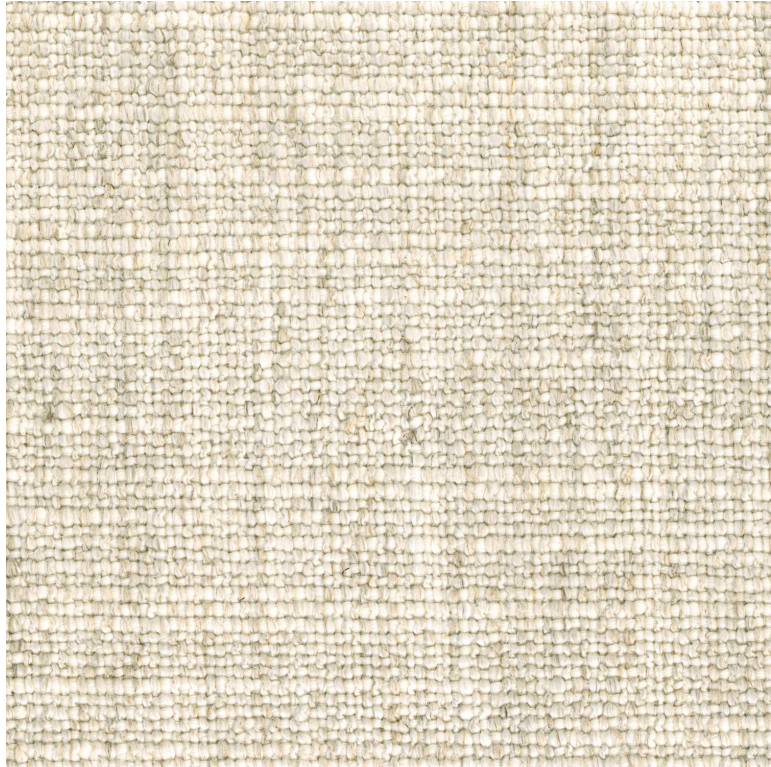


Limonata uni

Fabrics MISIA

Collection	CAPRISSIMA
Reference	M486901
Composition	20 % wv ; 35 % vi ; 12 % co ; 11 % li ; 20 % pc ; 1 % pes ; 1 % pa - -
Useful width	135 cm / 53 Inches
Match	Free match
Martindale	100000
Martindale use (Wyzenbeek)	Upholstery : superior or equal to 40 000 cycles (Martindale) and superior or equal to 30,000 double rubs
Wyzenbeek	100000
Pattern direction	Non-railroaded
Weight in g/m ²	790
Performance Accoustique	aw - 0.15
Use	 
Care	   
Country of origin	Belgium
Features	



1 variation

