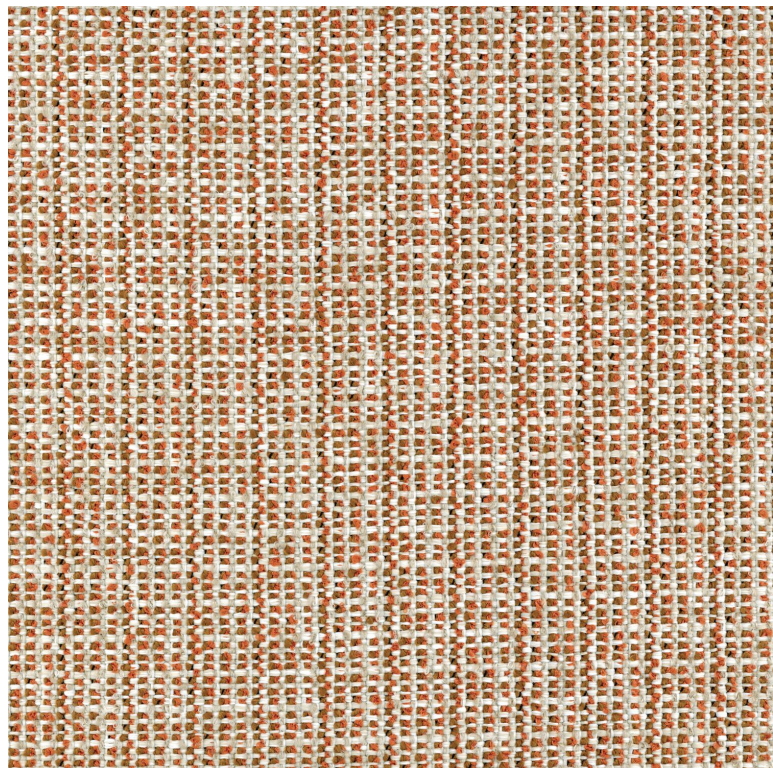


Vivara

Fabrics MISIA



| | |
|----------------------------|---|
| Collection | ÉVIDENCE |
| Reference | M509602 |
| Composition | 100 % pp - solution dyed |
| Useful width | 135 cm / 53 Inches |
| Match | Free match |
| Martindale | 70000 |
| Martindale use (Wyzenbeek) | Upholstery : superior or equal to 40 000 cycles (Martindale) and superior or equal to 30,000 double rubs |
| Wyzenbeek | 10000 |
| Pattern direction | Non-railroaded |
| Weight in g/m ² | 810 |
| Use |  |
| Care |      |
| Country of origin | Belgium |
| Features | Breathable Mold resistance |

3 variations

