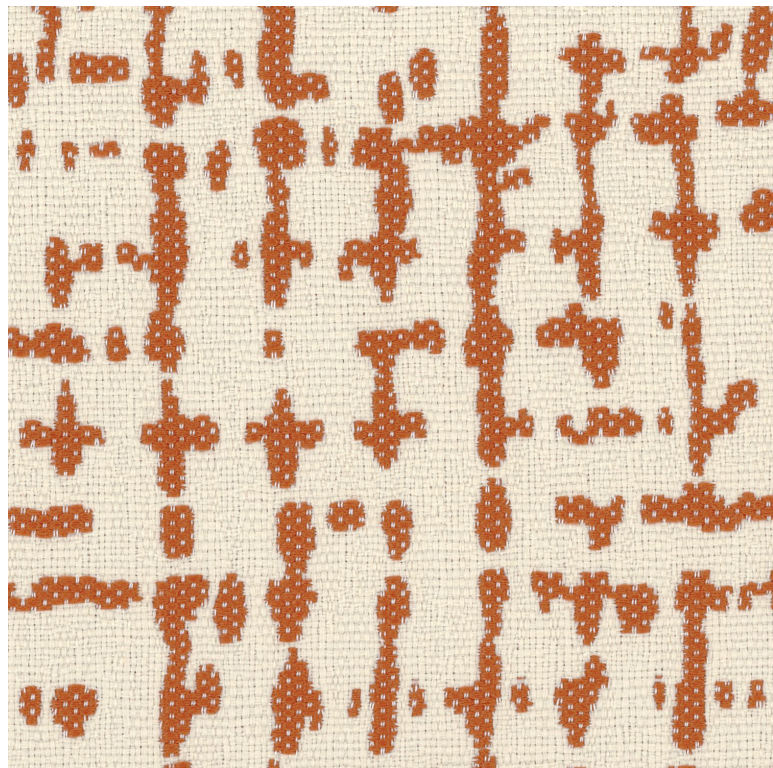


Marina grande

Fabrics MISIA



Collection [ÉVIDENCE](#)

Reference M512801

Composition 85 % pp ; 15 % pes - solution dyed

Useful width 139 cm / 55 Inches

Match Straight match

Martindale 25000

Martindale use upholstery : Between 20 000 and 40 000 cycles (Martindale) and between 15,000 and 30,000 double rubs (Wyzenbeek)

Wyzenbeek 20000

Pattern direction Non-railroaded

Weight in g/m² 480

Performance Accoustique aw - 0.15

Use 

Care     

Country of origin Italy

Horizontal repeat 70 cm / 28 Inches

Vertical repeat

30 cm / 12 Inches

Features

Block distance

3 variations

