

# Procida uni

Fabrics MISIA

Collection [ÉVIDENCE](#)

Reference M515101

Composition 100 % pp - solution dyed

Useful width 138 cm / 54 Inches

Match Free match

Martindale 50000


Martindale use Upholstery : superior or equal to 40 000 cycles (Martindale) and superior or equal to 30,000 double rubs (Wyzenbeek)

Wyzenbeek 65000

Pattern direction Non-railroaded

Weight in g/m<sup>2</sup> 645

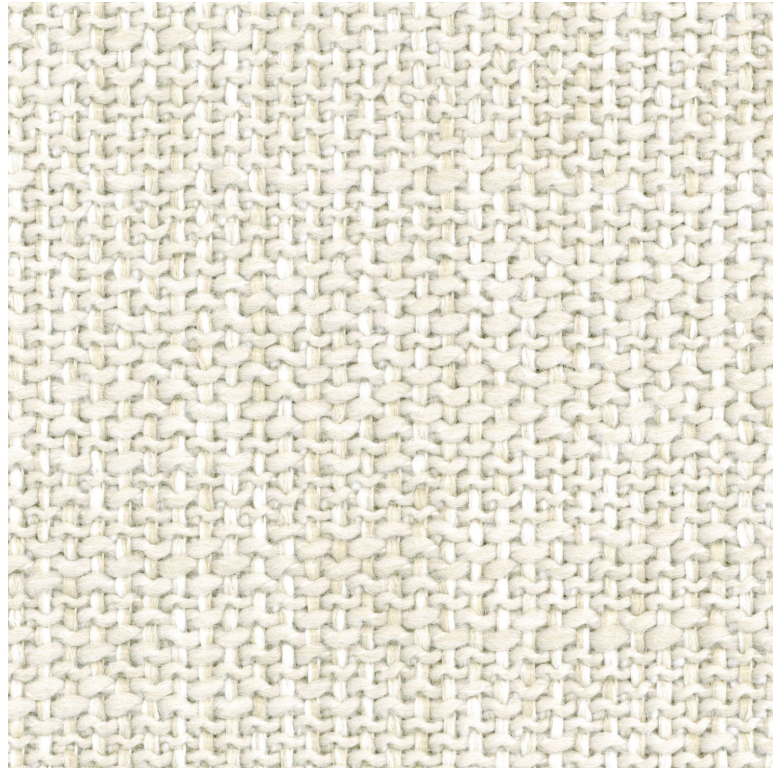
Performance Accoustique aw - 0.15

Use 

Care      

Country of origin Belgium

Features Breathable  
Mold resistance



## 1 variation

