

Maeli

Fabrics CAMENGO

Collection

Reference

52280389

Composition

70 % vi ; 30 % pes - -

Useful width

140 cm / 55 Inches

Match

Straight match

Martindale

40000

Martindale : superior or equal to 40 000 cycles (Martindale) and superior or equal to 30,000 double rubs (Wyzenbeek)

Wyzenbeek

50000

Pattern direction

Non-railroaded

Weight in g/m²

600

Use



Care



Country of origin

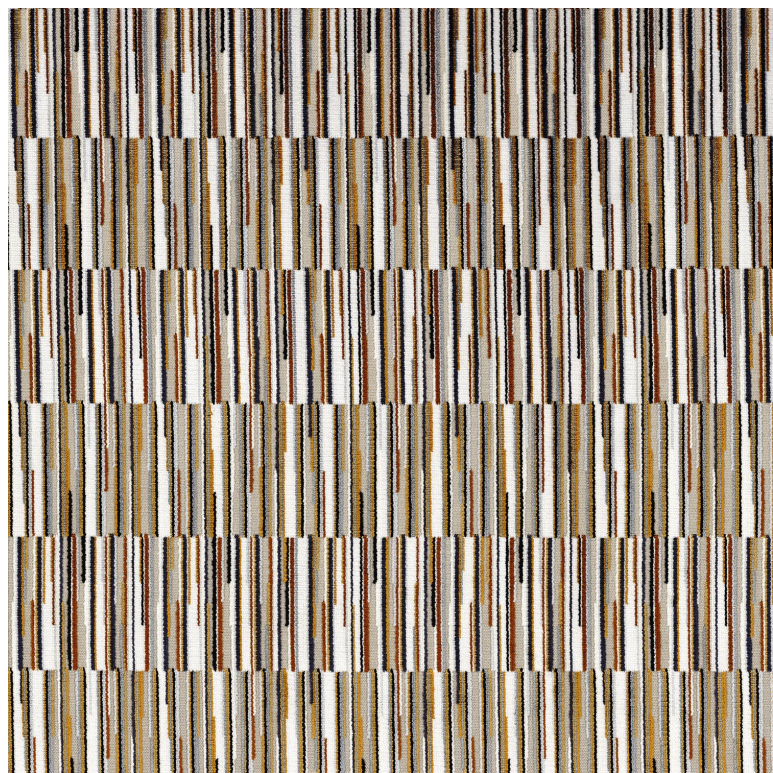
Belgium

Horizontal repeat

35 cm / 14 Inches

Vertical repeat

16 cm / 6 Inches



4 variations

