

# Nuages

Tissus CAMENGO

*Collection* [NUIT D'ETE](#)

*Référence* 44350451

*Coloris* Lin


*Composition* 58 % li ; 42 % co - wadding : 100% pes - lining : 70% pes - 30%co

*Laize utile* 276 cm / 109 Inches

*Raccord* Raccord droit

*Sens* De large

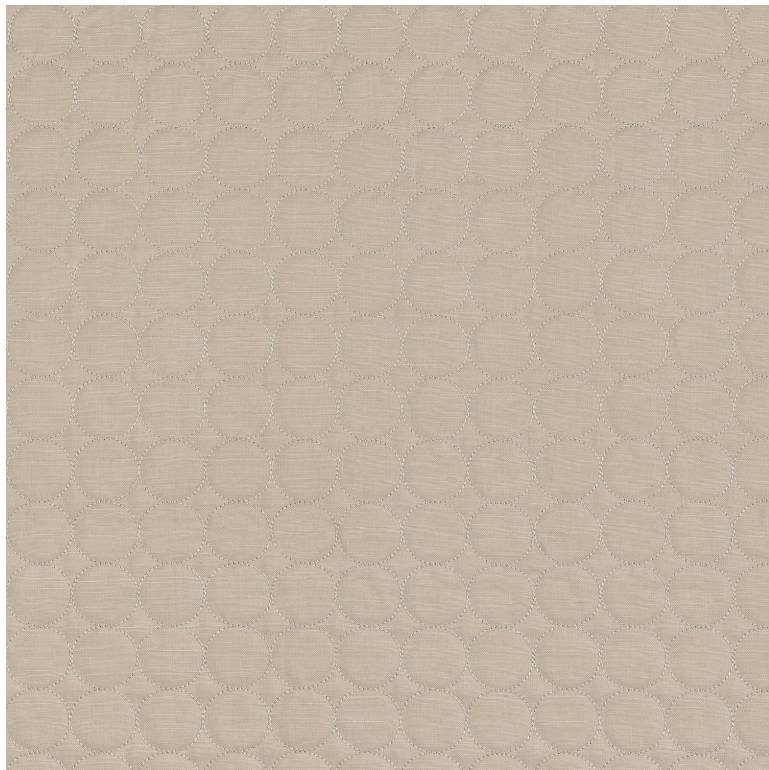
*Poids g/m<sup>2</sup>* 440

*Usage* 

*Entretien* 

*Rapport Horizontal* 3 cm / 1 Inches

*Rapport Vertical* 3 cm / 1 Inches



**6 déclinaisons**

