







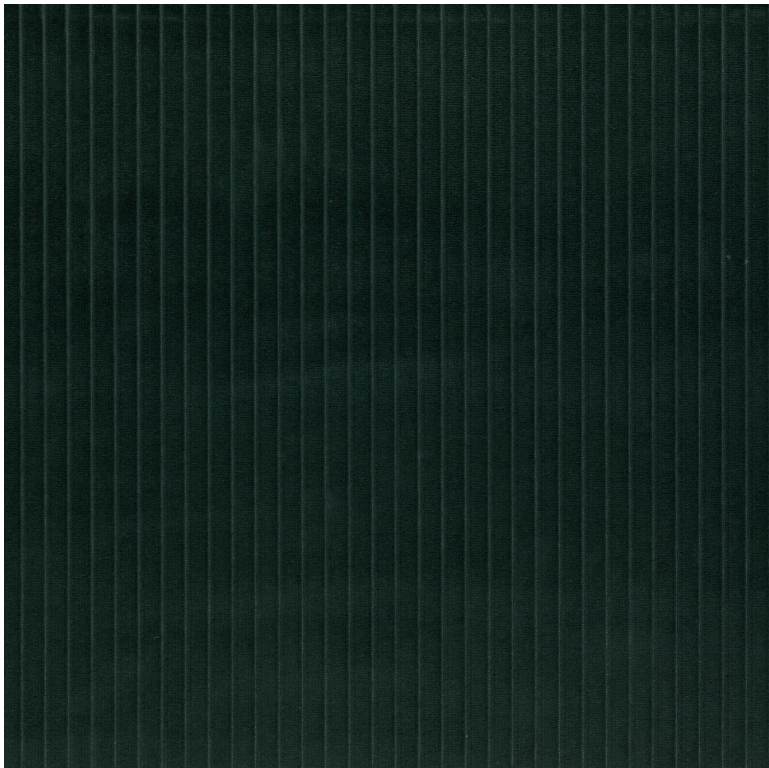


Portofino

Tissus MISIA

| | |
|------------------------------|---|
| <i>Collection</i> | FRENCH RIVIERA |
| <i>Référence</i> | M285807 |
| <i>Coloris</i> | Vert empire |
| <i>Composition</i> | 90 % co ; 10 % pes |
| <i>Laize utile</i> | 140 cm / 55 Inches |
| <i>Test Martindale</i> | 100000 |
| <i>Usage martindale</i> | Siège à usage intensif : >40,000 cycles (Martindale) et/ou >30,000 doubles rubs (Wyzenbeek) |
| <i>Wyzenbeek</i> | 55000 |
| <i>Sens</i> | De large |
| <i>Poids g/m²</i> | 400 |
| <i>Usage</i> |   |
| <i>Entretien</i> |       |
| <i>Pays d'origine</i> | Italie |



9 déclinaisons

