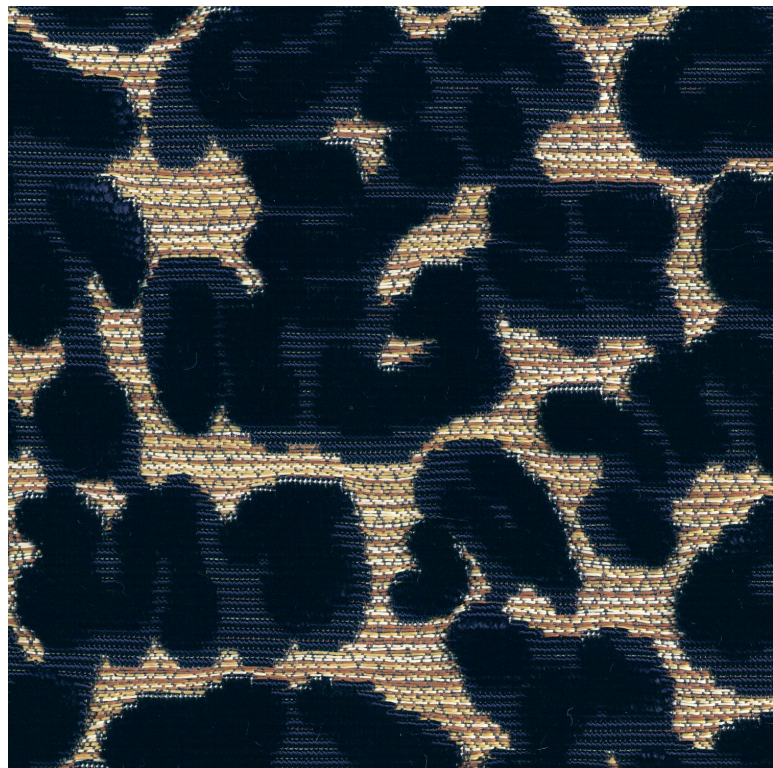










Éternelle

Tissus MISIA



<i>Collection</i>	PARIS-ROME
<i>Référence</i>	M393105
<i>Coloris</i>	Bleu misia
<i>Composition</i>	24 % co ; 76 % vi - pile 100% vi
<i>Laize utile</i>	140 cm / 55 Inches
<i>Raccord</i>	Raccord sauté 1/2
<i>Test Martindale</i>	40000
<i>Usage martindale</i>	Siège à usage intensif : >40,000 cycles (Martindale) et/ou >30,000 doubles rubs (Wyzenbeek)
<i>Wyzenbeek</i>	60000
<i>Poids g/m²</i>	600
<i>Usage</i>	 
<i>Entretien</i>	     
<i>Pays d'origine</i>	Inde
<i>Rapport Horizontal</i>	34 cm / 13 Inches
<i>Rapport Vertical</i>	31 cm / 12 Inches

6 déclinaisons

