






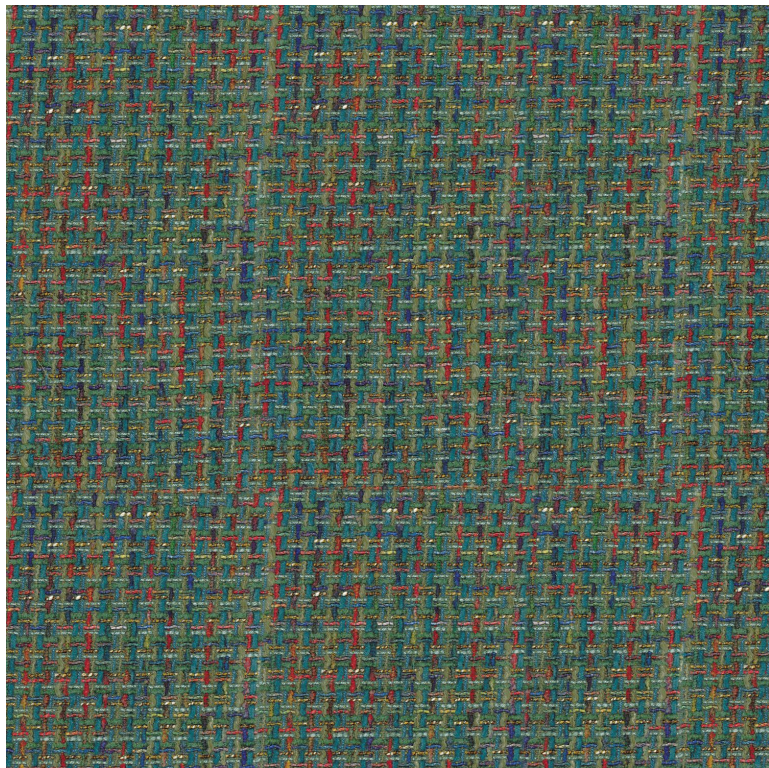


# CASAMANCE

## Structure

Tissus CASAMANCE

<i>Collection</i>	<a href="#">GALLIERA</a>
<i>Référence</i>	42310675
<i>Coloris</i>	Vert celadon
<i>Composition</i>	47 % pes ; 30 % co ; 14 % vi ; 5 % li ; 4 % pc
<i>Laize utile</i>	142 cm / 56 Inches
<i>Rétrécissement</i>	<3%
<i>Raccord</i>	Raccord libre
<i>Test Martindale</i>	40000
<i>Usage martindale</i>	Siège à usage intensif : >40,000 cycles (Martindale) et/ou >30,000 doubles rubs (Wyzenbeek)
<i>Wyzenbeek</i>	80000
<i>Poids g/m<sup>2</sup></i>	500
<i>Usage</i>	 
<i>Entretien</i>	     
<i>Pays d'origine</i>	Italie



## 8 déclinaisons

